

**A NEW BLACKFLY SPECIES FROM CALIFORNIA**

(DIPTERA, SIMULIIDAE)

BY R. W. COLEMAN, *San Francisco, Calif.*

The author made a detailed, state-wide survey of blackflies in California throughout 1947-1951. During this time he collected Simuliidae from nearly every county in the state. A new species is here described from pupae and from reared adult specimens collected from this survey.

***Cnephia stewarti*, new species**

*Adult female*.—Frons dark brown with pruinosity; antennae brown; viewing mesoscutum anteriorly from presentellar area mesoscutum dark brown with pale golden hair; mesoscutum with three indistinct silvery lines in the form of one median line and two other lines on either side of the median line; pleura dark brown; wings with anterior veins dark brown; basal section of radius with macrotrichia above; radial sector forked terminally, figs. 1, 2, stem vein dark pilose; halteres and stalk of halteres pale; legs brown with golden yellow hairs; tarsal claws with basal tooth large, tooth over one-half length of tarsal claw, fig. 3, abdomen brownish black with slight vestiture of golden hairs. Genitalia: Genital rod expanded into widely divergent arms; apical parts of arms developed into plates.

*Adult male*.—Face and frons brownish-black; antennae brown; mesoscutum dark brown to brownish black with golden pilosity and with same mesonotal pattern noted in female; pleura dark brown to brownish black; wings with anterior veins dark brown; basal section of radius with macrotrichia above; radial sector forked terminally; stem vein dark pilose; halteres and stalk of halteres brown; coxae dark brown; legs brown with slight pilosity; tarsal claws bifid; abdomen brown to brownish-black. Genitalia: Dististyle shorter than basistyle; apex of dististyle with two spines; basistyle longer than wide; adminiculum slightly longer than wide; basal prongs of adminiculum strongly chitinized.

*Pupa*.—Cocoon of indefinite shape; respiratory filaments six in number, fig. 4, anterior pair of filaments fuse to a common base with one posterior pair; tergite four without series of small spines near its anterior margin; sternite five with four spines; tail hooks present.

*Type locality*.—Near Spring Garden, Plumas County, California. The type specimen has been deposited in the collections of the U. S. National Museum.

*Distribution*.—Near Spring Garden, Plumas County, California, May 19, 1948 (W. W. Wirth and R. W. Coleman); approximately 6 mi. n.w. of Bassett's Station, Sierra County, California, May 28, 1950 (M. B. and R. W. Coleman).

This species has been collected only in May in California, and from the surfaces of small rocks. It was collected from a temporary stream near Spring Garden and from a snow run-

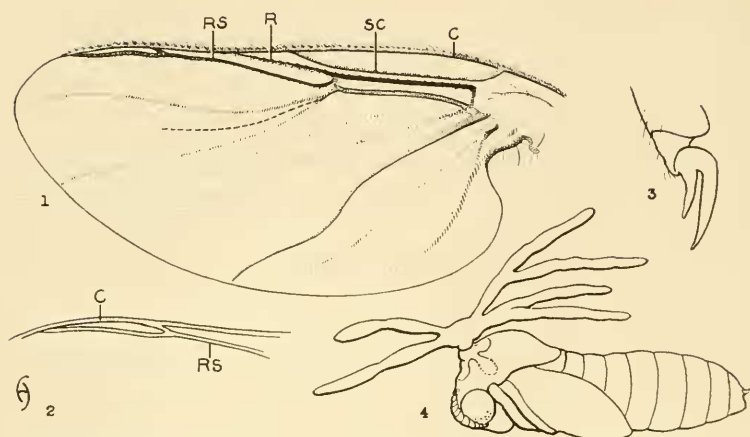


Fig. 1, wing; fig. 2, magnification of radial sector; fig. 3, tarsal claw; fig. 4, pupa. Drawings by F. Abernathy.

off near Bassett's Station. It has been taken in areas as high as about 6400 feet above sea level.

*Cnephia stewarti* differs from *Cnephia osborni* (Stains and Knowlton), a closely related species, in the adult stage in that, in the female of *C. stewarti*, the mesoscutum bears three silvery white lines and the basal tooth of the tarsal claw is over one-half the length of the tarsal claw itself, while, in the female of *C. osborni*, no silver markings are present on the mesoscutum and the basal tooth of the tarsal claw is less than one-half the length of the tarsal claw.

**ENTOMOLOGICAL SOCIETY OF WASHINGTON  
620TH REGULAR MEETING, OCTOBER 2, 1952**

The 620th regular meeting of the Entomological Society of Washington was called to order at 8 P. M. Thursday, October 2, 1952, in Room 43 of the U. S. National Museum, by President W. D. Reed. Thirty-four members and nineteen visitors attended.

The picnic committee was complimented by President Reed on the success of the June picnic, enjoyed by all.

New members elected to the Society were:

Dr. David Russell Cook, U. S. National Museum, Washington 25, D. C.  
M. E. Yount, U. S. Bureau of Entomology and Plant Quarantine, Washington 25, D. C.

Dr. Boynton H. Booth, 910 Hume Mansur Bldg., Indianapolis, Indiana  
Major K. C. Emerson, 42nd A.I.B., A.P.O. 42, c/o Postmaster, New York, N. Y.

Professor Robert B. Kleinhaus, 3535 Evanston Ave., Cincinnati 7, Ohio